



WALL PAPER APPLICATION GUIDE



What you will need to get started:



1 or 2 People



Straight Edge Level



Sharp Knife



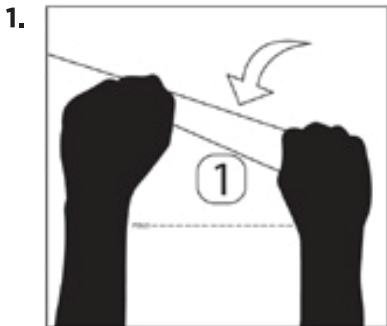
Step Ladder



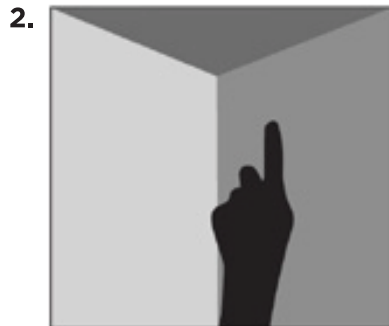
Squeegee (Hands are ok!)

Inspect your wall for any defects and fill cracks and holes if required, and sand until smooth. You must start with a smooth clean surface. Remove any picture hooks or switch plates from your wall/walls.

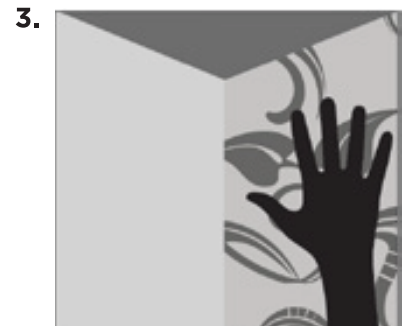
Please note that this is a general guide for application. If you require more in depth guidance, please try Youtube for tutorials or give us a call!



Start from the left with wallpaper panel indicated number "1" and then install sequentially as per your wallpaper panels guide.



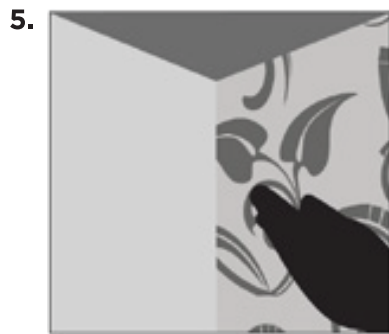
Please take your time. It's essential that Panel 1 is positioned correctly as this is your guide for the remainder of your wall. If adjoining another wall or doorway you may need to slightly overhang panel 1 on the left side and trim later if the walls/door are not perfectly square.



Line up your custom wallpaper's top edge with your ceiling. Ensure the wallpaper is square and use your hands to smooth it onto the wall. If you need to butt the panel into another wall use the vertical left hand edge as your square. If this doesn't work allow the panel to overhang the left hand edge, as you can trim it later.



Partly peel the backing sheet off on the floor but don't remove it all, place it on the wall and then slowly and evenly keep peeling the backing sheet away from the panel whilst you continually smooth it onto the wall with your hands.



All bubbles and wrinkles should just rub out by applying little pressure, you may damage the print by applying too much pressure. If you cannot remove them you may have to slowly remove the effected area and re-apply.



All additional panels are to be applied as per Panel 1, if your roof line is square this will be an easy job otherwise you may have to overlap and allow for trimming. Match patterns closely and if they overlap you can simply cut away the overlapping section.



WALL PAPER APPLICATION GUIDE



What you will need to get started:



1 or 2 People



Straight Edge Level



Sharp Knife



Step Ladder



Squeegee (Hands are ok!)

Inspect your wall for any defects and fill cracks and holes if required, and sand until smooth. You must start with a smooth clean surface. Remove any picture hooks or switch plates from your wall/walls.

Please note that this is a general guide for application. If you require more in depth guidance, please try Youtube for tutorials or give us a call!

7.



Trim any excess print with a sharp knife.

Handy Tips

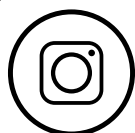
- Make sure to hang the paper in the correct order.
- Check designs prior to hanging, to ensure you hang them all the right way and in the right direction.
- Ensure your scissors and/or knife are sharp and free from paste and any residue, this allows for straight and neat cuts.
- If you have to wallpaper around light switches it is advisable and easier to cover the switch with the wallpaper and then cut diagonally over the switch and around it with a sharp knife.

Maintenance

Your wall panel shouldn't require any ongoing maintenance but can be wiped gently with a warm damp cloth. If any bubbles reappear just gently rub them downwards.

Removal

If you require removal of your wall panel simply start with the last panel installed and slowly pull it downwards away from the wall, starting at the top edge. Try to keep the panel as flat and parallel to the wall as possible to avoid any damage to either the wall or the panel.



TAG US WITH A PHOTO OF YOUR INSTALLATION ON INSTAGRAM.
USE THE HASHTAG #SUNNYCOASTSIGNS
AND DONT FORGET TO FOLLOW US @SUNNYCOAST_SIGNSANDWRAPS

6 Eenie Creek Rd
Noosaville, QLD
Ph. 07 5474 2742

WWW.SUNNYCOASTSIGNS.COM.AU